

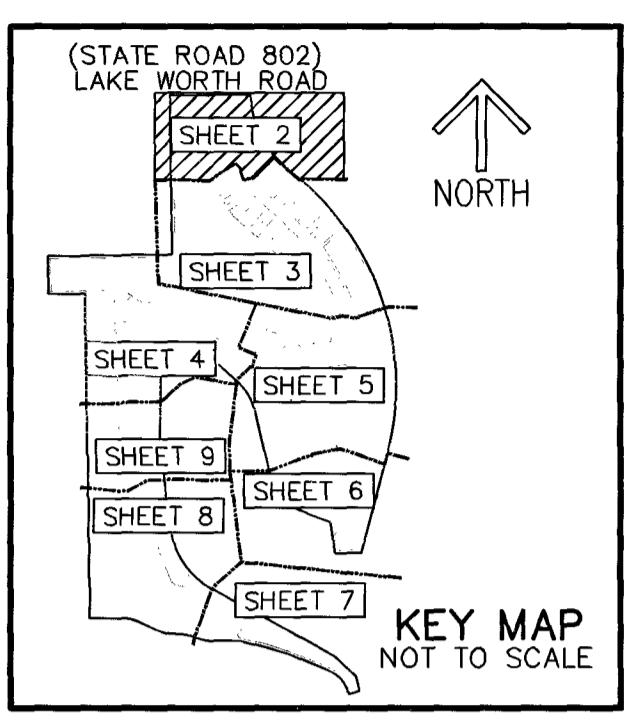
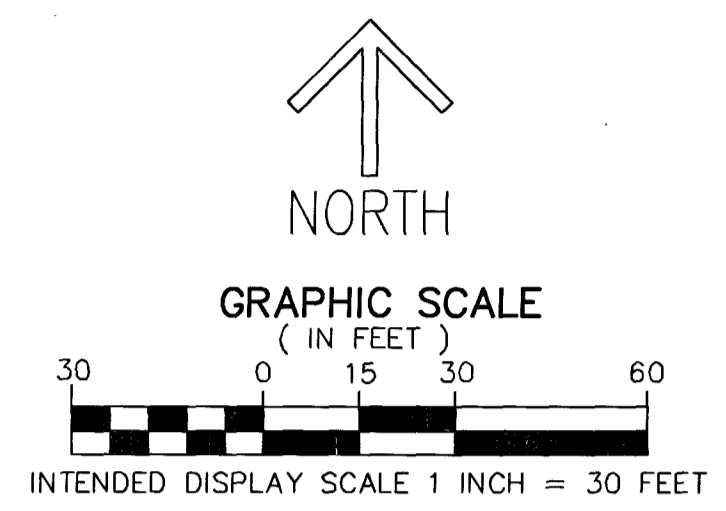
21

THIS INSTRUMENT PREPARED BY
 DAVID P. LINDLEY
 OF
CAULFIELD & WHEELER, INC.
 SURVEYORS - ENGINEERS - PLANNERS
 7900 GLADES ROAD, SUITE 100
 BOCA RATON, FLORIDA 33434 - (561)392-1991
 CERTIFICATE OF AUTHORIZATION NO. LB3591

LAKESHORE AT THE FOUNTAINS

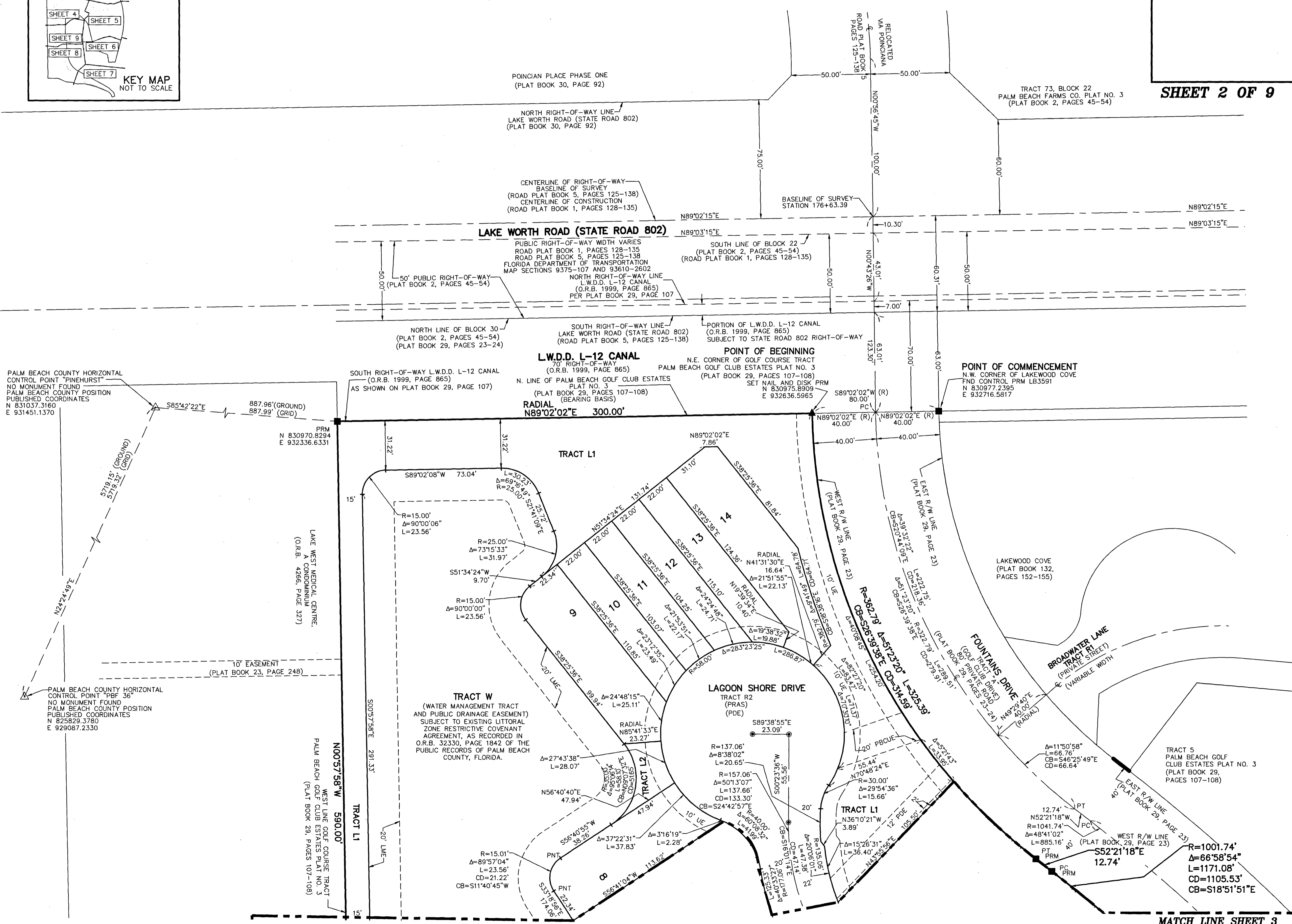
BEING A REPLAT OF A PORTION OF THE GOLF COURSE TRACT, PALM BEACH GOLF CLUB ESTATES PLAT NO. 3,
 AS RECORDED IN PLAT BOOK 29, PAGES 107 AND 108 OF THE PUBLIC RECORDS OF PALM BEACH COUNTY, FLORIDA,
 LYING IN SECTIONS 27 AND 28, TOWNSHIP 44 SOUTH, RANGE 42 EAST, PALM BEACH COUNTY, FLORIDA

SHEET 2 OF 9



- LEGEND/ABBREVIATIONS**
- CL - CENTERLINE
 - Δ - DELTA (CENTRAL ANGLE)
 - (BT6) - BOUNDARY TRACT 6 (PLAT BOOK 29, PAGES 107-108)
 - CB - CHORD BEARING
 - CD - CHORD DISTANCE
 - E - EASTING (WHEN USED WITH COORDINATES)
 - FND - FOUND
 - L - ARC LENGTH
 - LB - LICENSED BUSINESS
 - LMAE - LAKE MAINTENANCE ACCESS EASEMENT
 - LSE - LIFT STATION EASEMENT
 - L.W.D. - LAKE WORTH DRAINAGE DISTRICT
 - N - NORTHING (WHEN USED WITH COORDINATES)
 - O.R.B. - OFFICIAL RECORD BOOK
 - PBCUE - PALM BEACH COUNTY UTILITY EASEMENT
 - PC - POINT OF CURVATURE
 - PDE - PUBLIC DRAINAGE EASEMENT
 - PT - POINT OF TANGENCY
 - PNT - POINT OF NON-TANGENCY
 - (PRAS) - PRIVATE RESIDENTIAL ACCESS STREET
 - (P) - PALM BEACH GOLF CLUB ESTATES PLAT NO. 3 PLAT BOOK 29, PAGES 107-108
 - R - RADIUS
 - (R) - RADIAL LINE
 - (RPB) - ROAD PLAT BOOK 1, PAGES 128-135 ROAD PLAT BOOK 5, PAGES 125-138
 - R/W - RIGHT-OF-WAY
 - PCP - DENOTES PERMANENT CONTROL POINT NAIL AND METAL DISK STAMPED "PCP LB3591"
 - PRM - DENOTES PERMANENT REFERENCE MONUMENT SET 4" x 4" x 24" CONCRETE MONUMENT WITH ALUMINUM DISK STAMPED "C&W PRM LB3591"
 - ▲ - DENOTES HORIZONTAL CONTROL POINT
 - ▲ - DENOTES FOUND PERMANENT REFERENCE MONUMENT NAIL AND DISC STAMPED "PRM" LB 3591

NOTES
COORDINATES, BEARINGS AND DISTANCES
 COORDINATES SHOWN ARE GRID
 DATUM = NAD 83 (90 ADJUSTMENT)
 ZONE = FLORIDA EAST
 LINEAR UNIT = US SURVEY FEET
 COORDINATE SYSTEM 1983 STATE PLANE
 TRANSVERSE MERCATOR PROJECTION
 ALL DISTANCES ARE GROUND, UNLESS OTHERWISE NOTED
 SCALE FACTOR = 1.0000295
 GROUND DISTANCE X SCALE FACTOR = GRID DISTANCE
 BEARINGS AS SHOWN HEREON ARE GRID DATUM
 NAD 83 (90 ADJUSTMENT), FLORIDA EAST ZONE.



MATCH LINE SHEET 3

MATCH LINE SHEET 3